

Bryce - Secap 26K Inkjet Address Printing System

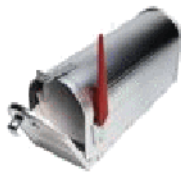
Get high resolution print, durability and up to 26,000 pieces per hour

- Stepping up to the 26K is a great way to increase the capacity of your mailing operations.
- The innovative split head configuration of the 26K allows the printing of address, barcode, message line, return address, logo and indicia all in one pass!
- Utilizing spot color enhances your mail for better results. And, using USPS barcodes help save on postage expenses as well as improves delivery and response time.
- The 26K provides reliable, high performance and high quality inkjet printing to get you ahead with class thus enhancing your mailing efforts.



[Download PDF](#)
[Purchase Ink](#)

[| Home](#) | [| Secap 26K](#) | [| 26K Spec](#) | [| 26K_Print](#) |



All For Mailers

**If you have any question please call
 Toll Free 1-866-471-6764
<http://www.AllForMailers.com>**

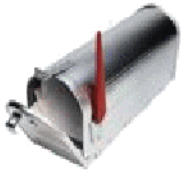
Bryce - Secap 26K Address Barcode Printer Specifications



[Download PDF](#) [Purchase Ink](#) [More Information](#)

Throughput	Up to 26,000 #10 envelopes/hour in super draft quality Up to 19,500 #10 envelopes/hour in draft quality Up to 13,000 #10 envelopes/hour in letter quality Up to 6,500 #10 envelopes/hour in executive quality
Image Area	Total of 2.5" using 5 pens over an image area of 9.5" x 13.5"
Media Size	Width 3" to 13"; Length 5" to 15.5" Thickness: up to 1/4"

Print Resolution	150, 200, 300, 600 dpi horizontal, 600 vertical
Print Modes	Super Draft, Draft, Letter, Executive
Fonts	All Windows true type fonts
Barcode	USPS, Planet Code Barcode, EAN-13/UPC-A Internal
Interface	Centronics Parallel or USB
Driver Compatibility	Windows 95, 98, 2000, NT, ME and XP
Printhead/InkJet Cartridge	Versatile Black, Spot Colors
Physical Characteristics	Dimensions: 23"W x 21"D x 12"H Weight: 70 lbs.
Certification	UL, CSA



All For Mailers

If you have any question please call

Toll Free 1-866-471-6764

<http://www.AllForMailers.com>